

METER CARE AND HOW TO READ YOUR METER

Baffin Bay WSC has iPERL meters within its system that can be read through an automated meter reading system. These are some important customer information and care tips that you will need to become familiar with:

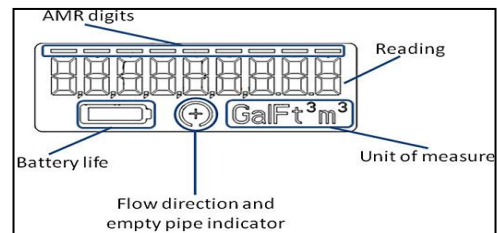
- The automated meter reading (AMR) system will allow our staff to retrieve reads electronically and reduce the need to enter your property.

1) Please **mow around your meter box--NEVER MOW OVER IT!** There is a black dome looking structure (pit lid housing) on top of your meter that houses the radio antennae. If you break or damage the pit lid housing, you will be required to pay for this part and the labor to install it.

2) If you need to remove the meter box cover, **remember that it is very heavy.** Gently remove it and lay it on its back (dome side down). **Be careful not to drop it because there is a radio attached to it with a cable running to the meter that can be broken or damaged. If you break the cable by jerking the lid off of the meter and tossing it to the side, you will be required to pay for this part and the labor to install it.**

- If your meter or radio appears to be damaged or inoperable, it is in your best interest to notify Baffin Bay WSC immediately and we will gladly assess the concern in a timely manner. **PLEASE DO NOT REMOVE OR TRY TO REPAIR THE METER OR RADIO AS DAMAGE COULD RESULT IN A FINE TO YOU.**

- **HOW TO READ YOUR METER:** The Sensus iPERL large LCD digital display is easily readable.



1. There are 9 digits / bars on the Sensus iPerL meter at the top of the digital display. Only the 1st 4 numbers at the far left will be read. If the reading on your meter is 0352, then 352,000 gallons of water have flowed through your meter.
2. You can also monitor the 9th number to the far right to check for leaks.
3. To check for leaks, use the Flow Direction / Empty Pipe Indicator. If there is a plus sign in the middle of this circle, water is passing through the meter.
4. Battery life indicator for the meter is located at the bottom left of the display.

3) Periodically check your water meter. With all water turned off inside and outside of your house, check your meter. If the right most digit on your water meter is moving, **this is a definite indication that you have some kind of WATER LEAK SUCH AS THAT TRIGGERED BY A RUNNING TOILET, LEAKING FAUCET, ETC. THAT NEEDS TO BE REPAIRED.**